

# DAIMLER TRUCK

## Step-by-Step User Guide: How to Change Your Account Password

Easily update/change your password with clear instructions



# Outline of Password Change Process

- Introduction to Password Change Process
- Accessing the Password Change Link
- Logging in to Your Account
- Choosing and Setting a New Password
- Processing the Password Change
- Confirmation and Sign Out

# Introduction to Password Change Process



# Purpose of the Guide



## **User Assistance**

This guide aims to help users securely update/change their passwords when they know their current password and are able to log in.

## **Step-by-Step Instructions**

Detailed steps are provided to guide users through the password change process without confusion.

## **Security Focus**

The guide emphasizes security measures to protect user accounts during the password change procedure.

# Overview of the Steps Involved

## **Accessing Password Change Link**

Begin the process by accessing the link detailed in this guide and located on the login page.

## **Logging In with Current Credentials**

Log in using your current credentials to verify your identity before proceeding with the password change.

## **Selecting a New Password**

Choose a new password that meets security requirements and is easy for you to remember.

## **Processing the Change**

Once the new password is selected, submit the change and wait for the processing confirmation.

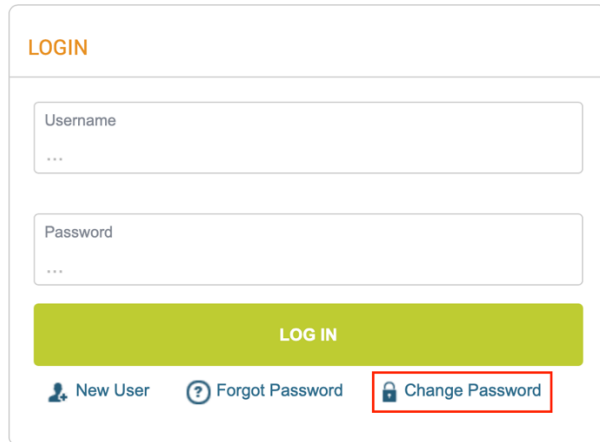
## **Confirming the Reset**

After processing, you will receive a confirmation of the password reset, allowing you to log in with the new password.

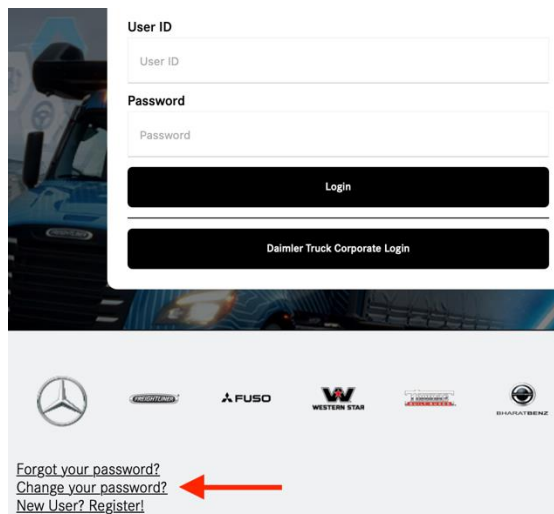
# Accessing the Password Change Link



# Where to find the Change Password link?



A screenshot of a login form titled "LOGIN" in orange. It contains two input fields: "Username" and "Password", each with three dots indicating a masked input. Below the fields is a green "LOG IN" button. At the bottom, there are three links: "New User" with a person icon, "Forgot Password" with a question mark icon, and "Change Password" with a lock icon. The "Change Password" link is highlighted with a red rectangular box.



A screenshot of the Daimler Truck Corporate Login page. It features a background image of a truck cab. The login form includes fields for "User ID" and "Password", a "Login" button, and a "Daimler Truck Corporate Login" button. Below the form, there are logos for Mercedes-Benz, FUSO, WESTERN STAR, and SHANLAI BENZ. At the bottom, there are three links: "Forgot your password?", "Change your password?", and "New User? Register!". A red arrow points to the "Change your password?" link.

## Access via Login Page

There is a link in the lower-left corner of the new login screen which will take you to the same form as the link in the old login screen.

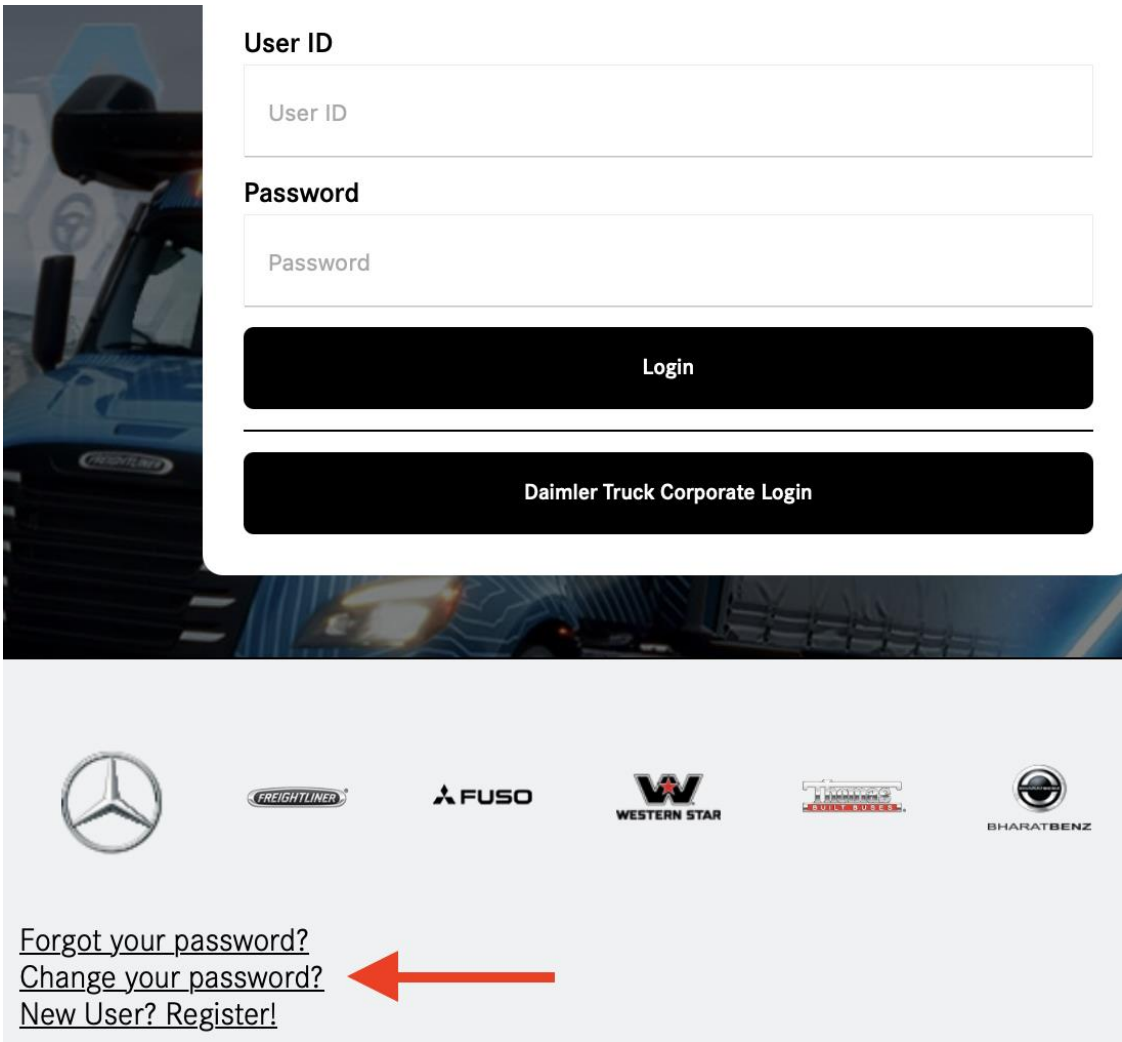
## Support Page

The link is also available on the [CIAM Support Page](#) in the 'Password' section under 'Update/Change your Password'.

## Direct Link

You can also reach the link directly by clicking here: [Change Password](#)

# Screenshot: Change Password Link

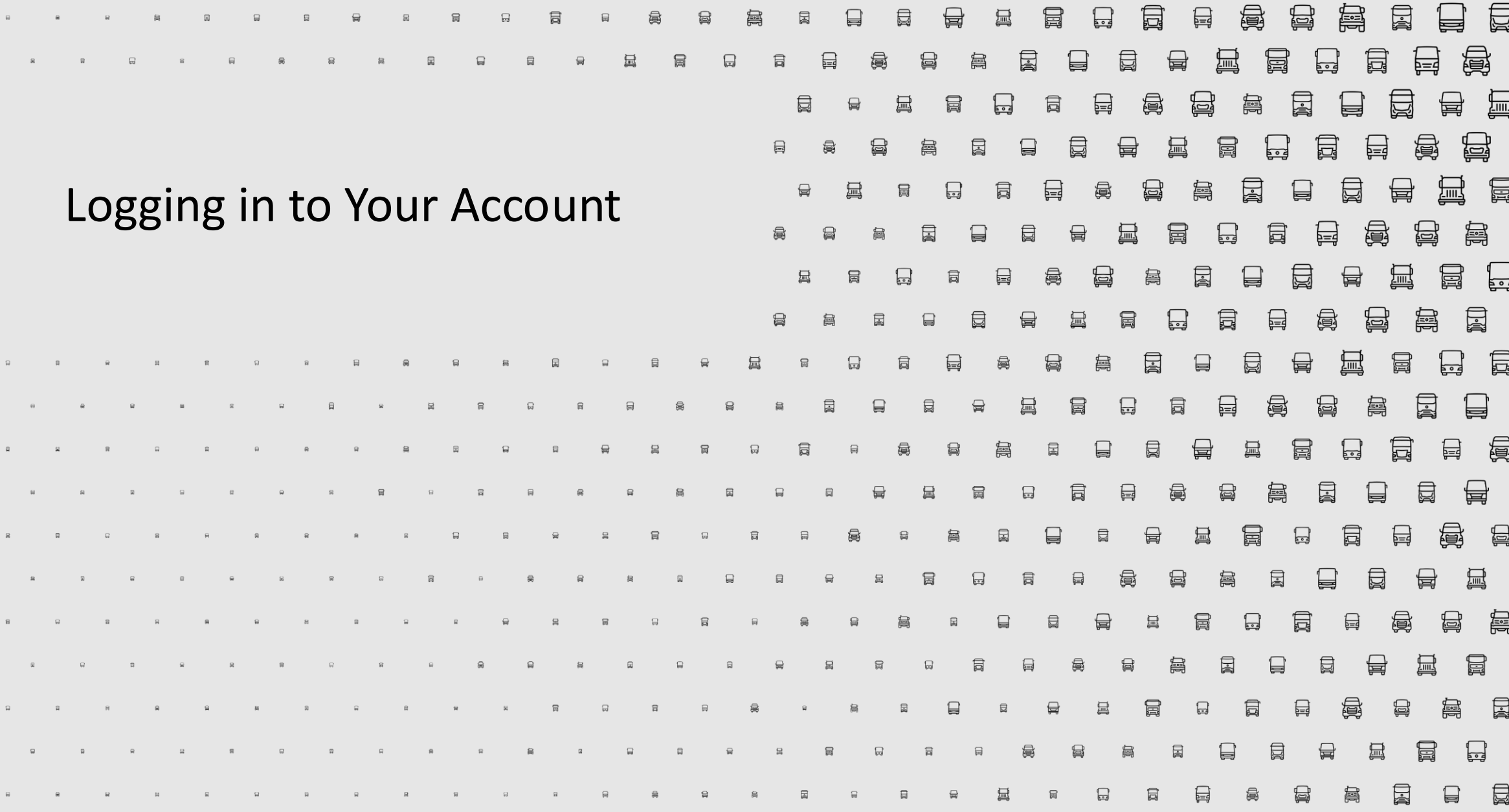


## Change Password Location

This screenshot clearly indicates the location of the 'Change your Password?' link in the user login page.



# Logging in to Your Account

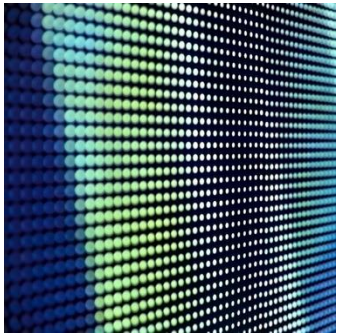


# Entering Your Current Username and Password



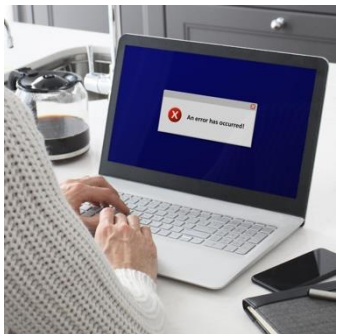
## Input Username

Enter your current username accurately to ensure successful login. Double-check for typos before proceeding.



## Input Password

Type in your existing password carefully. Ensure that the Caps Lock is off to avoid errors. No password reset is necessary.



## Avoid Login Errors

Make sure to verify both username and password to prevent any login issues. Accuracy is key.

# Screenshot: Log in Screen

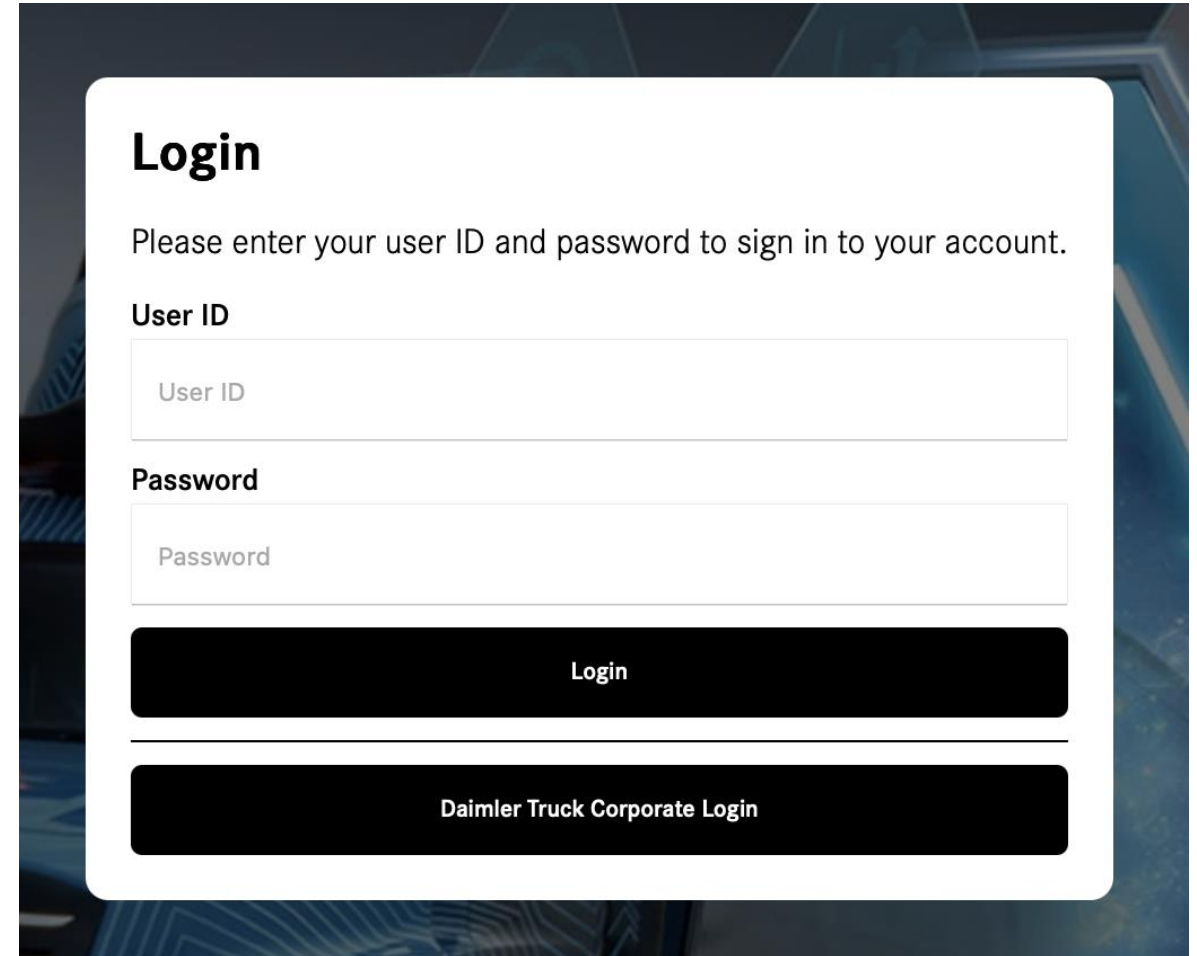
## User Interface Overview

Simply type in the same username and password that you have historically used. No change in either value is necessary.

## Daimler Truck Corporate Login Button

This button is only for DT employees and contractors that have an (...@TBDIR.net) account. This button will redirect to a Microsoft Azure login page.

Standard customer accounts can simply click the 'Login' button.

A screenshot of a login interface. At the top, the word "Login" is displayed in a large, bold, black font. Below it, a message reads: "Please enter your user ID and password to sign in to your account." There are two input fields: the first is labeled "User ID" and the second is labeled "Password". Both fields have placeholder text of the same name. Below the input fields, there are two black buttons with white text. The top button is labeled "Login" and the bottom button is labeled "Daimler Truck Corporate Login". The entire login form is set against a dark background with a faint, abstract pattern.

# Choosing and Setting a New Password



# Typing Your New Password

Daimler

## Reset Password

Please enter a new password and click the Change Password button. Your new password must meet the following requirements:

- Password is case sensitive.
- Must be at least 10 characters long.
- Must be no more than 32 characters long.
- Must have at least 1 lowercase letter.
- Must have at least 1 uppercase letter.
- New password may not have been used previously.

Please type your new password

New Password 

Confirm Password

Change Password

Cancel

## Creating a Strong Password

A strong password is essential for protecting your online accounts from unauthorized access. All necessary criteria for your new password is listed on the screen.

## Password Input Field

Make sure to enter your new password in the designated field accurately. Double-check for any typing errors before saving.

# Selecting From a Randomly Generated List

New Password

Auto-generate a new password

Random Passwords

The following passwords have been randomly generated for you. These passwords are based on real words to make them easier to remember, but have been modified to make them difficult to guess.

qMjdwVRrq\	WS5tLGtuh+
^QxzMcCLZe	A&!2sPFqrx
U/f=C/8?Q4	anFUdFW9\$E
C,\$jM%(gLh	4,8BaWRMsA
7C\$)F+buk2	25g7M42w\$X
s6SJ(9PK&(	Y2FJ(r\,r?
ZA@kKQFu+=	EbB,nE!zEP
rwL&MgPR2G	K.J=rT!GQ,
6Bg95R!jt4	!Re8BF+C6Z
?\$4A=?j^xH	9D)aup.Wt5

## Enhanced Security

If you click the small icon next to ‘New Password’ a window with a list of randomly generated passwords appears.

## Ease of Selection

Click on any randomly generated password and it will automatically be entered into the ‘New Password’ field for you.

## Complex Combinations

Randomly generated lists simplify the password selection process, ensuring users can easily pick secure options if desired.

# Confirmation and Sign Out



# Confirmation Message on Successful Reset

Daimler

## Please Wait

Your password is being changed. This process may take several minutes, please be patient.



## Reset Password

Your password has been successfully reset. If you encounter log-in issues following this process, please clear the browser cache and cookies. Once done, close your browser and reopen it before attempting to log in again.

Continue

## Successful Password Reset

A confirmation message appears after a successful password update, ensuring users know the process was completed.

## User Assurance

The displayed message provides assurance to the user that their password has been successfully changed without any issues.



# Final Sign Out Process



## Importance of Signing Out

Signing out after resetting your password is crucial for maintaining account security and preventing unauthorized access.

## Resetting Your Password

Always reset your password regularly and remember to sign out afterward to ensure your account remains secure.

# Screenshot: Sign Out Page

The Daimler logo is a blue rectangular box with the word "Daimler" in white text.

## Sign out

You are now signed out.

### Visual Guide

This screenshot serves as a visual guide to help users easily navigate the sign-out process.

### Secure Logout Process

Ensuring a secure logout after password reset is crucial for user account protection.